

Madera County Probation Department



Stop Truancy Opportunity Program

**Mid-Year
Performance Report
July- December
2006**

Table of Contents



Introduction	3
Part I Participant Demographics	3
Part II Program Statistics	4
Part III Academic Performance and Behavior	8
Part IV Additional Services	9
Part V Conclusion	10

Introduction

The Stop Truancy Opportunity Program (STOP) is in its sixth year of operation, since its inception in 2001. This mid-year report includes data from the time period beginning on July 1, 2006 and ending on January 20, 2007. A total of 92 students were served during this time period. During this funding period the STOP program began serving Desmond Middle School in addition to the eight participating Madera County Schools served in previous years of program implementation. Those schools include Dairyland

Elementary, Enterprise

Secondary, Martin Luther King Jr.

Middle School, North Fork

Elementary, Oak Creek

Intermediate, Ranchos Middle

School, Thomas Jefferson Middle

School, and Wilson Middle

School. Table 1 lists the total

enrollment for the fall 2006

semester by school site. Dairyland

Elementary did not have any

students participating in STOP

during this reporting period.

Table 1. Participants by School: First Semester

Participating Schools	Count	Percent
Dairyland Elementary	0	0.0%
Desmond Middle School	16	17.4%
Enterprise Secondary	2	2.2%
Martin Luther King Jr. Middle School	20	21.7%
North Fork Elementary	6	6.5%
Oak Creek Intermediate	8	8.7%
Ranchos Middle School	5	5.4%
Thomas Jefferson Middle School	23	25.0%
Wilson Middle School	12	13.0%
Total	92	100.0%

I. Participant Demographics

Upon completion of the fall semester for the 2006-2007 school year, the total population of active participants was 92. Demographic information was disaggregated by school site, and it was found that the Hispanic population was the most represented (68.5%) ethnic group within the program (see Table 2). Table 3 indicates that the population of STOP participants was fairly equally distributed between genders with 52.2 percent females and 47.8 percent were males.

Table 2. Ethnic Background of Participants by School: First Semester

Participating Schools	African American	Asian	Hispanic	Native American	Non-Hispanic White	Total
Dairyland Elementary	0	0	0	0	0	0
Desmond MS	1	0	15	0	0	16
Enterprise Secondary	0	0	2	0	0	2
Martin Luther King Jr. MS	1	0	19	0	0	20
North Fork Elementary	0	0	0	2	4	6
Oak Creek Intermediate	0	0	1	0	7	8
Ranchos Middle School	0	1	1	0	3	5
Thomas Jefferson MS	1	0	21	0	1	23
Wilson Middle School	0	0	4	0	8	12
Total	3	1	63	2	23	92
Percent	3.3%	1.1%	68.5%	2.2%	25.0%	100%

Table 3. Gender of Participants by School: First Semester

Participating Schools	Female	Male	Total
Dairyland Elementary	0	0	0
Desmond Middle School	8	8	16
Enterprise Secondary	0	2	2
Martin Luther King Jr. Middle School	10	10	20
North Fork Elementary	4	2	6
Oak Creek Intermediate	4	4	8
Ranchos Middle School	0	5	5
Thomas Jefferson Middle School	12	11	23
Wilson Middle School	10	2	12
Total	48	44	92
Percent	52.2%	47.8%	100%

II. Program Statistics

The Madera STOP program served a total of 92 students during the fall 2006 semester. Of these students, the program placed no participants on probation for truancy offenses during this performance period (see Table 4) and no students were given court ordered restitution or community service (Table 5). As there is not a victim in these types of cases, restitution is not ordered. Prior to 2003 truancy offenders were given court ordered community service. However, after 2003 the program was no longer allowed to refer juveniles to community service in the City of Madera.

Community service is still a viable, dispositional option in the City of Chowchilla and Eastern Madera County.

Table 4. Probation Status: First Semester

	Count	Rate
Placed on probation for truancy offense	0	0%
Violated terms of current probation	0	0%
Completed probation	0	0%

Table 5. Restitution and Community Service Status: First Semester

	Count	Rate
Given court ordered restitution	0	0%
Successfully completed restitution	0	0%
Given court ordered community service	0	0%
Successfully completed community service	0	0%

Of the 92 total students served, 4 participants completed the Madera STOP program. Those who did not proceed with the program through the end of the fall 2006 semester left due to reasons shown in Table 6.

Table 6. Reasons for Leaving the Program: First Semester

<i>n</i> = 92	Count	Percentage
Completed the Program	4	4.3%
Moved to another city or state	4	4.3%
Transferred to another school	2	2.2%
602 W & I wards	4	4.3%
Other	6	6.5%
Total	20	21.7%

Table 7. Arrest Rates Prior to and After STOP Referral by Type of Offense: First Semester (n = 92)

Offense Type	Count	Rate
Arrested prior to STOP referral		
Status offense	1	1.1%
Felony offense	1	1.1%
Misdemeanor offense	2	2.2%
Total	4	4.4%
Arrested after STOP referral		
Status offense	0	0%
Felony offense	0	0%
Misdemeanor offense	1	1.1%
Total	1	1.1%

The program annually tracks participants' arrest, incarceration and probation violation rates, while specifically identifying if a participant's arrest, incarceration, or probation violation occurred before or after referral for STOP participation. Tables 7 and 8 indicate participants' arrest and incarceration rates for the fall 2006 semester of all participating students.

Table 8. Participants' Incarceration Rates Prior to and After STOP Referral by Type of Offense: First Semester

Offense Type	Count	Rate
Incarcerated prior to STOP referral		
Status offense	0	0%
Felony offense	0	0%
Misdemeanor offense	0	0%
Total	0	0%
Incarcerated after STOP referral		
Status offense	0	0%
Felony offense	0	0%
Misdemeanor offense	0	0%
Total	0	0%

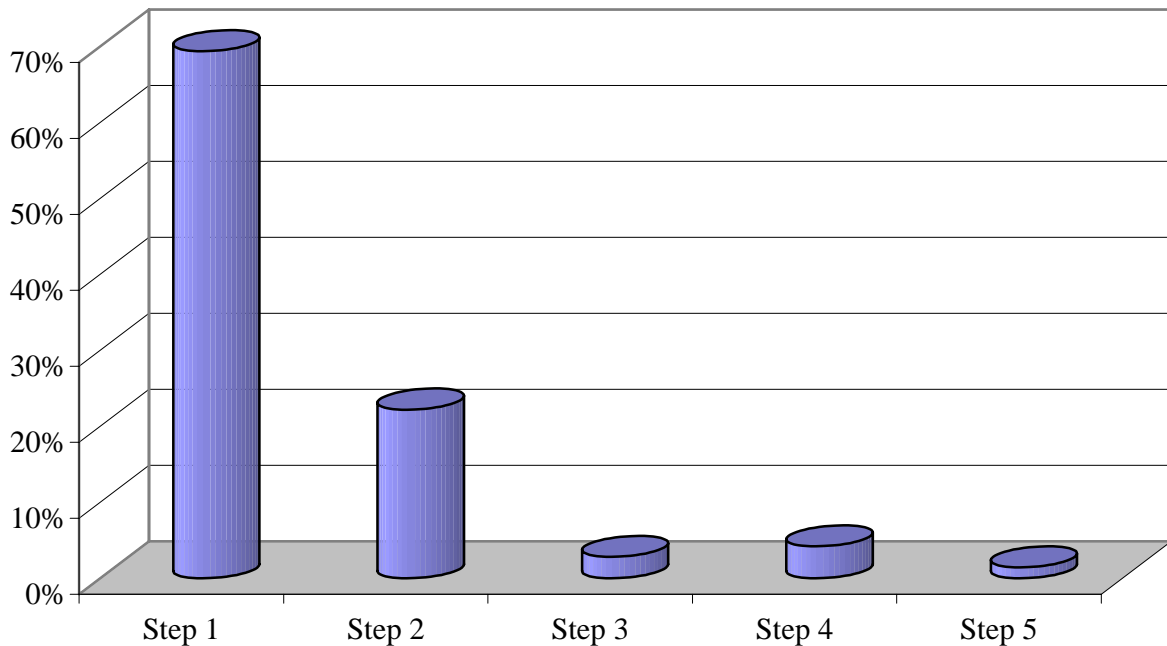
STOP utilizes a step sequence to determine a student's level of truancy. At **Step 1** (student's initial STOP referral), the student has 1 to 3 unexcused absences and a letter is sent to the parents notifying them of the student's truant behavior. **Step 2** indicates that the student incurred a fourth unexcused absence, at which time another notification is mailed to the parents. A meeting between the probation officer, the parents, and a school official soon follows. **Step 3** indicates the occurrence of a fifth unexcused absence and a third letter of notification is mailed to the parents by the District Attorney. A compulsory Truancy Mediation Team Meeting is scheduled for students and parents to

attend. **Step 4** indicates a sixth unexcused absence and a School Attendance Review Board (SARB) meeting is held. **Step 5** (the final step) indicates that a seventh unexcused absence occurred. The student is referred to court as a habitual truant and formal probation is requested. Table 9 and Figure 1 illustrate the number of active participants reported at each step in the STOP sequence at the end of the first semester. *Each of the 92 STOP participants was truant at enrollment and was at least a Step 1 participant during the fall 2006 semester.* The information below pertains only to those 72 participants who were enrolled in STOP at the end of the fall 2006 semester and indicates those students who progressed beyond Step 1.

Table 9. Participants at Each Truancy Level ($n = 72$): First Semester

Step	Number	Percent
1	50	69.4%
2	16	22.2%
3	2	2.8%
4	3	4.2%
5	1	1.4%

Figure 1.
Percentage of Students at Each Truancy Level at Mid-Year



III. Academic Performance and Behavior

At the time of this mid-year report 72 STOP participants were on file as active students. Three students did not have data available for the purpose of these analyses. One student was on medical leave for the semester due to a severe accident, but remains as an active student in the system. Two students transferred schools during the middle of the semester and grades and attendance information were not available at the time of this report from their previous non-STOP school sites. Table 10 indicates the mean attendance rate was 87.3 percent and the mean grade point average (GPA) of STOP participants was 1.53 at the end of the fall 2006 semester.

Table 10. Mean Grade Point Average (GPA) and Attendance Rate by School: First Semester

Participating Schools	Sample Size	Mean GPA	Mean Attendance Rate
Dairyland Elementary	0	--	--
Desmond Middle School	16	1.59	88.0%
Enterprise Secondary	1	1.50	85.6%
Martin Luther King Jr. Middle School	17	1.53	92.2%
North Fork Elementary	3	0.56	88.5%
Oak Creek Intermediate	3	1.72	90.3%
Ranchos Middle School	3	1.67	83.2%
Thomas Jefferson Middle School	20	1.80	84.6%
Wilson Middle School	6	0.75	81.0%
Total	69	1.53	87.3%

Program evaluators measured STOP participants' behavior by tracking the number of active participants who were suspended, the number of suspension occurrences, and the total number of days students were suspended during the fall 2006 semester. Nineteen (26.4%) of the 72 active participants were suspended during the fall 2006 semester for a total of 68 days. Students who were suspended received an average of approximately 2 days of suspension each.

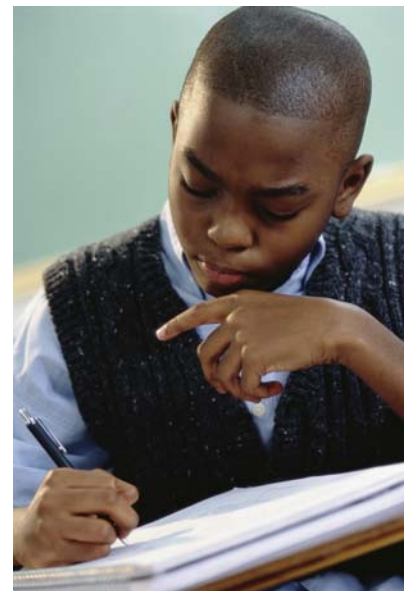


Table 11. Number of Students Suspended and Total Days of Suspension by School: First Semester

Participating Schools	Sample Size	No. Students Suspended	%	Suspension Occurrences	Days of Suspension
Dairyland Elementary	0	--	--	--	--
Desmond Middle School	16	7	43.8%	7	20
Enterprise Secondary	1	1	100.0%	5	5
Martin Luther King Jr. MS	17	1	5.9%	3	3
North Fork Elementary	3	2	66.7%	2	3
Oak Creek Intermediate	3	0	0.0%	0	0
Ranchos Middle School	3	1	33.3%	5	13
Thomas Jefferson MS	21	4	19.0%	4	13
Wilson Middle School	8	3	37.5%	9	11
Total	72	19	26.4%	35	68

IV. Additional Services

The Madera STOP program evaluated additional services students participated in to determine the overall impact of program participation. Table 12 indicates the involvement of all participants ($n = 92$) in other programs and services offered through Madera County as of the end of the fall 2006 semester. Over half of the participating students (56.5%) were referred to STOP tutoring. Student participation data were analyzed to determine how many students received one or more services. It was found that 64 of the 92 active participants (67.1%) served during the fall 2006 semester received one or more of the services listed in Table 12.

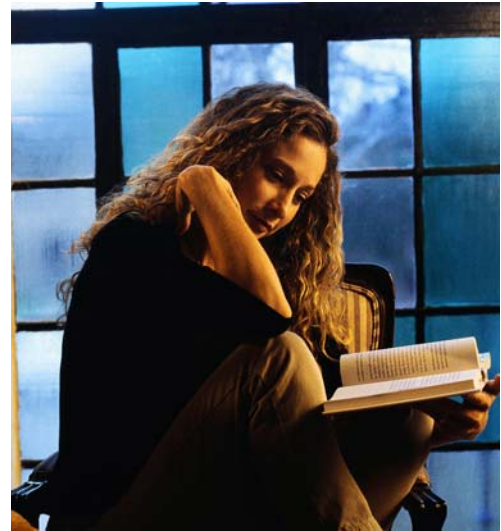


Table 12. Students Participating in Other Programs and Services by School

Program / Service	Dairyland	Desmond	Enterprise	MLK	North Fork	Oak Creek	Ranchos Middle Thomas Jefferson	Wilson	Total	Percent
Cal-Learn	0	0	0	0	0	0	0	0	0	0%
Referred to Mountain Area Clinicians	0	0	0	1	3	2	0	0	6	6.5%
Referred to Madera Co. Clinicians	0	0	1	0	0	0	0	2	3	3.7%
Referred to STOP Tutoring	0	14	2	11	0	1	0	21	52	56.5%
Referred to Boys and Girls Club	0	0	0	0	0	6	0	0	6	6.5%
<i>Received 1 or more of the above services</i>	0	14	2	12	3	6	0	21	64	67.1%
Total School Population	0	16	2	20	6	8	5	23	12	92

V. Conclusion



Over the last four years, the Madera STOP program has witnessed a consistent decline in the number of program participants placed on probation for truancy offenses, indicating the program’s effectiveness in preventing truancy. At the time of this mid-year report, no participants were placed on probation for truancy offenses and none were arrested after referral to the STOP program. Approximately 99 percent of the current program participants remained in Steps 1 through 4 of the STOP Sequence during the fall semester. This result is a strong indication of the effectiveness of services provided by the case workers and probation officers to the students. Through early intervention and prevention measures, program staff have contributed to limiting the number of participants being referred for court action.

Following the completion of the second semester in May 2007, fall data will be compared with data reported for the spring semester to further analyze the effectiveness of the Madera Probation Department’s Stop Truancy Opportunity Program.