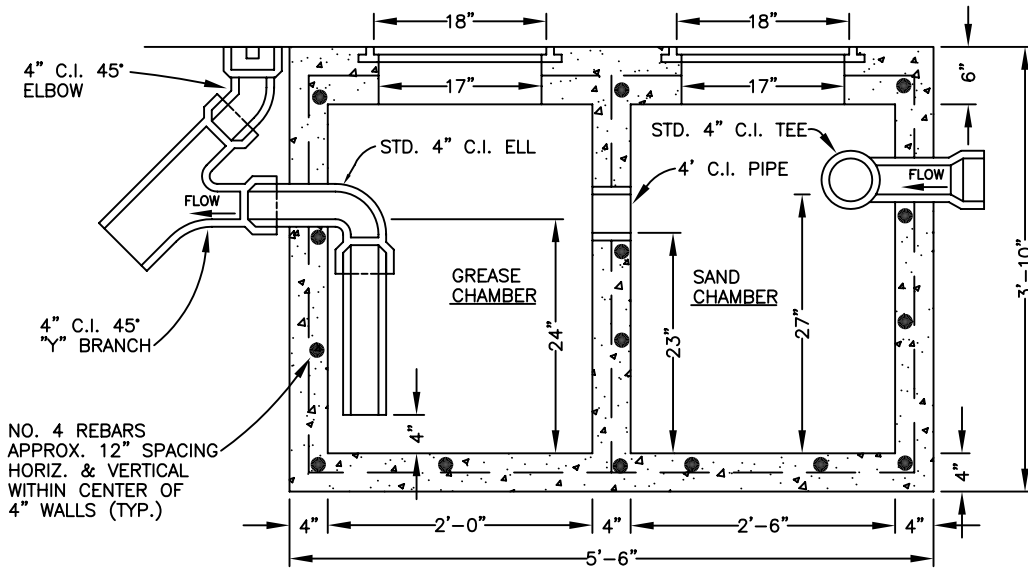
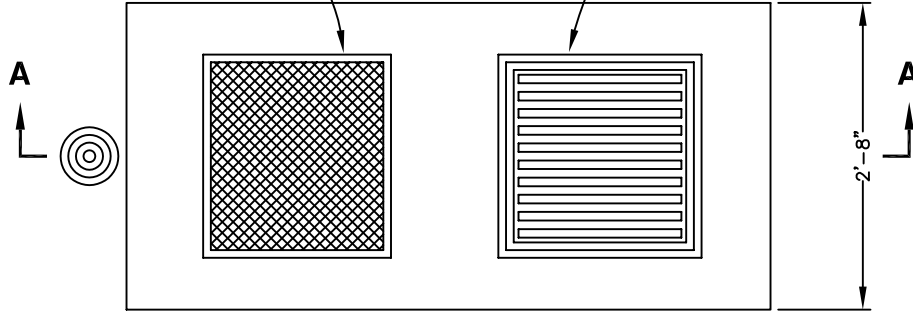


ALHAMBRA FDRY. COVER &
 FRAME. 18" x 18"; NO. A2015,
 STANDARD COVER OR NO. A2017,
 TRAFFIC COVER; OR APPROVED
 EQUAL.

ALHAMBRA FDRY. GRATING &
 FRAME. 18" x 18"; NO. A2010,
 STANDARD GRATING OR NO. A2012,
 TRAFFIC GRATING; OR APPROVED
 EQUAL.

PLAN



SECTION A-A

NOTES

1. DIMENSIONS SHOWN ARE MINIMUM.
 PROPER SIZING TO BE DETERMINED
 BY CALCULATION, SUBJECT TO APPROVAL
 OF COUNTY ENGINEER.
2. RESPONSIBILITY FOR CLEANING &
 MAINTENANCE BELONGS TO THE
 PROPERTY OWNER.
3. AN ALTERNATE GREASE INTERCEPTOR DEVICE
 OF STANDARD MANUFACTURE MAY BE SUBSTITUTED
 FOR THAT SHOWN ABOVE, SUBJECT TO APPROVAL
 OF THE COUNTY ENGINEER.

THIS STANDARD APPLIES TO:

- a. RESTAURANTS
- b. AUTOMOTIVE GARAGES
- c. OTHER, AS DIRECTED BY
 THE COUNTY ENGINEER.

Spec's By _____	COUNTY OF MADERA	Date 7-1-81
Drawn By <u>J. SHIELDS</u>	SAND AND GREASE INTERCEPTOR	Scale NONE
APPROVED BY _____		Drawing No. S-9
REVISIONS	8/1/02	