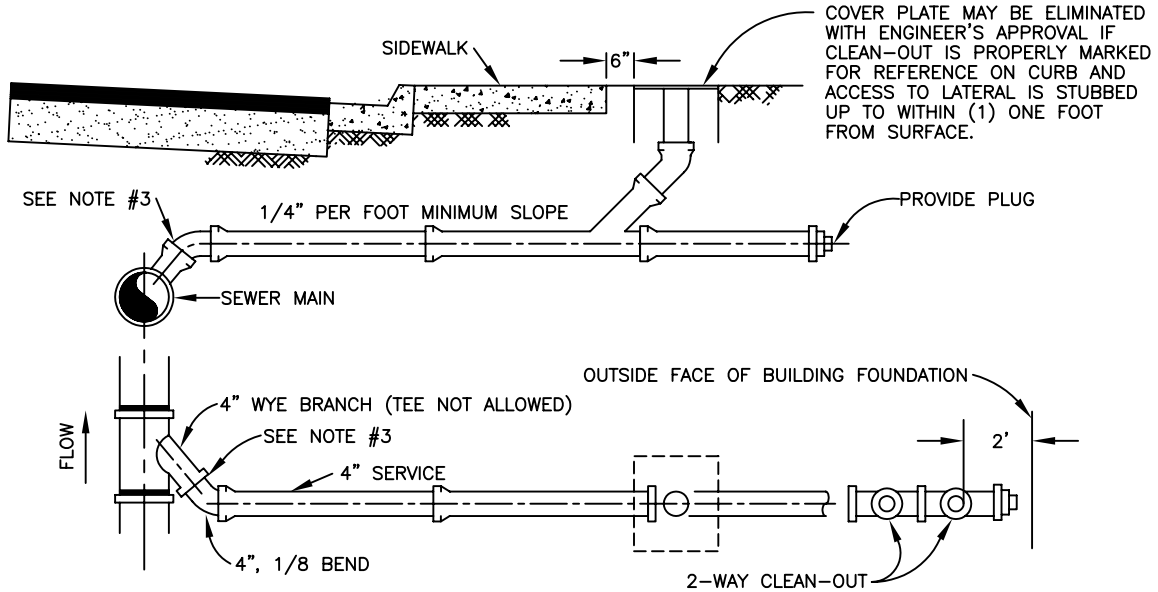
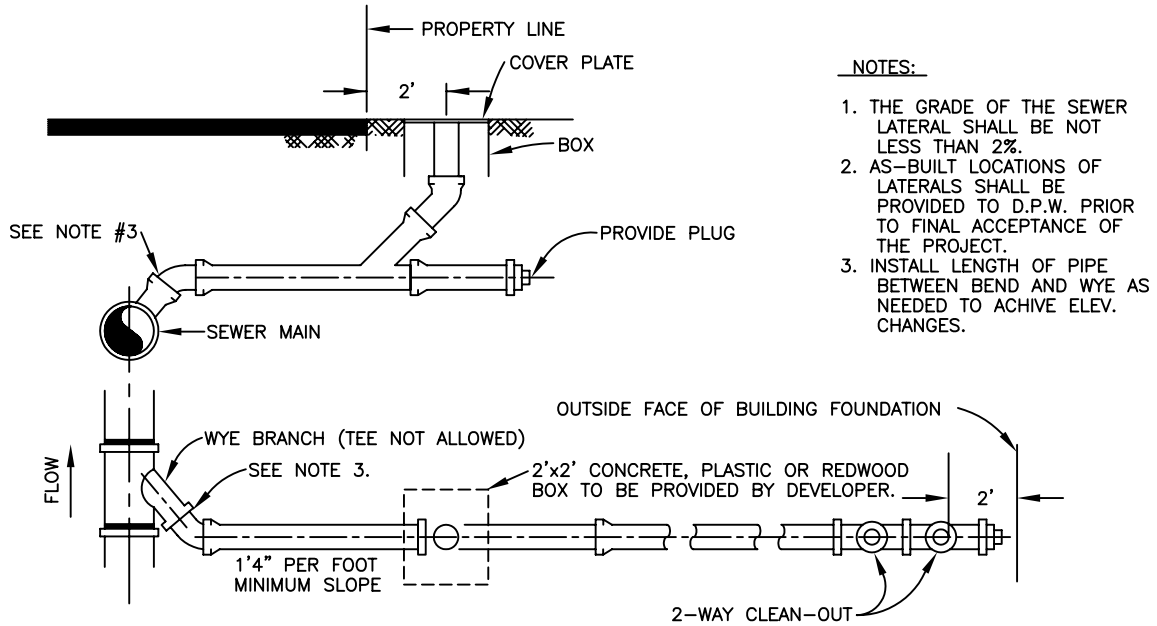


## STREET SERVICE CONNECTION



## ALLEY SERVICE CONNECTION



### NOTES:

1. THE GRADE OF THE SEWER LATERAL SHALL BE NOT LESS THAN 2%.
2. AS-BUILT LOCATIONS OF LATERALS SHALL BE PROVIDED TO D.P.W. PRIOR TO FINAL ACCEPTANCE OF THE PROJECT.
3. INSTALL LENGTH OF PIPE BETWEEN BEND AND WYE AS NEEDED TO ACHIEVE ELEV. CHANGES.

Spec's By \_\_\_\_\_

**COUNTY OF MADERA**

Date 7-1-81

Drawn By J. SHIELDS

**SEWER CONNECTION**

Scale NONE

APPROVED BY \_\_\_\_\_

Drawing No.

S-10

REVISIONS 8/1/02