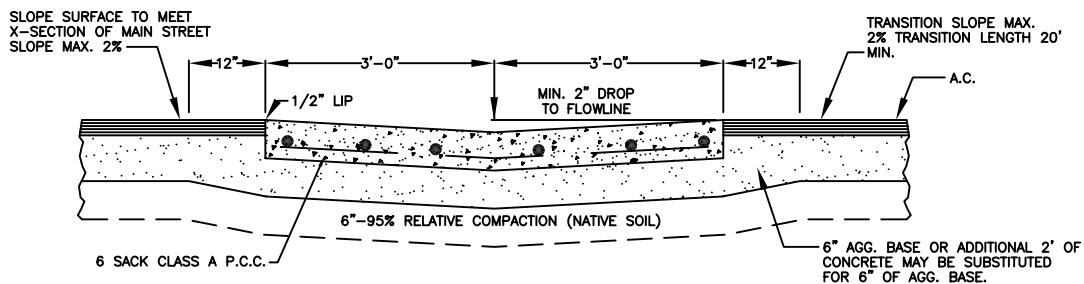
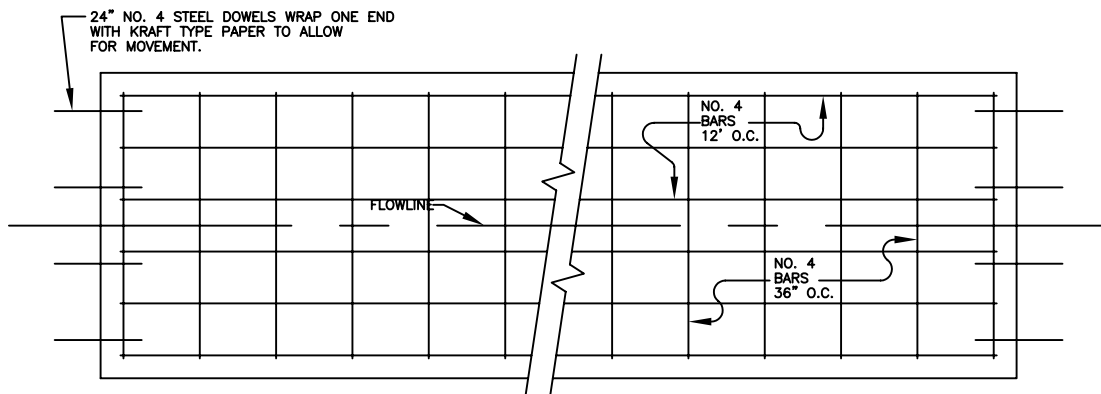


PLAN
SCALE 1"=10'

* SUBJECT TO APPROVAL BY COUNTY



SECTION OF GUTTER
SCALE 1/2" = 1'0"



STEEL DETAILS
NO SCALE

* HUNT PROCESS CURING COMPOUND SHALL BE APPLIED TO FRESH CONCRETE BY ROLLING, BRUSHING, OR SPRAYING FOR CURING.

* CROSS GUTTER SHALL BE 6 FT. OR 8 FT. AS SPECIFIED BY ROAD COMMISSIONER.

| | | |
|----------------------------|------------------------------|----------------------|
| Spec's By _____ | COUNTY OF MADERA | Date 3-5-80 |
| Drawn By <u>J. SHIELDS</u> | | Scale AS SHOWN |
| APPROVED BY _____ | STANDARD CROSS GUTTER | Drawing No. ST-1A |
| REVISIONS | | 8/1/02 |