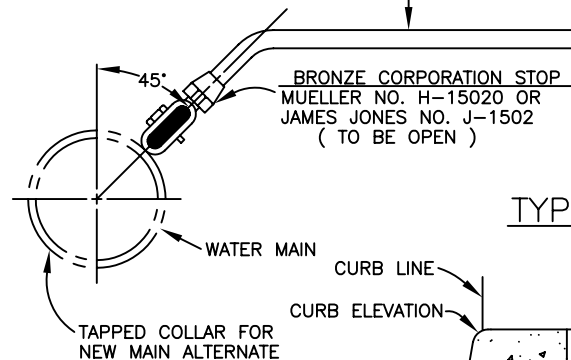
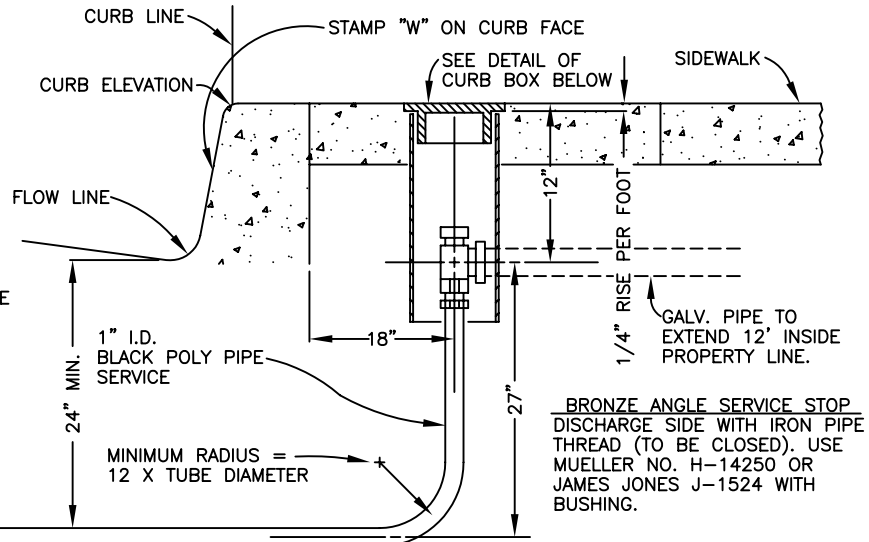
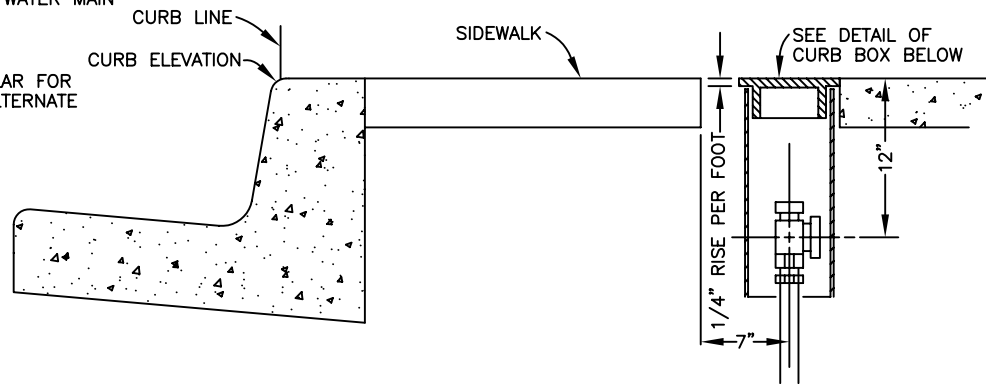


**NOTE:**

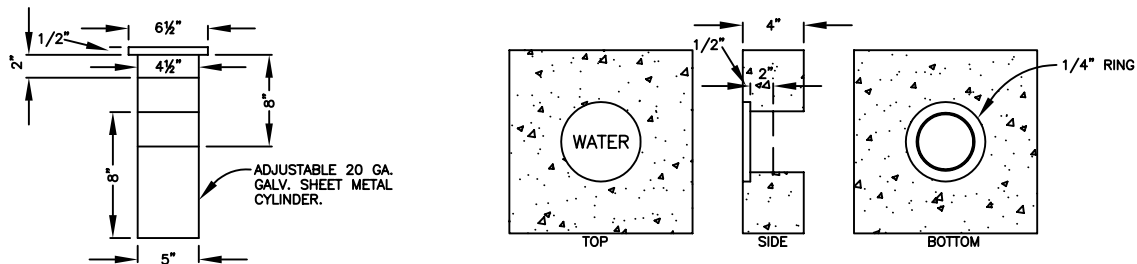
1. SERVICE SADDLES SHALL BE USED ON 6" A.C. WATER MAIN. SERVICE SADDLE SHALL BE OF BRONZE CONSTRUCTION. SINGLE STRAP PERMITTED FOR TAPS 1" AND SMALLER. DOUBLE STRAPS REQUIRED FOR TAPS LARGER THAN 1".
2. CORPORATION STOP SHALL NOT BE PLACED IN MILLED SECTION OF A.C. WATER MAIN. INSTALL CORPORATION STOP WITH KEY OUT, IN ACCESSIBLE LOCATION. SOLDERED JOINTS NOT PERMITTED.
3. ALL DIRT SHALL BE REMOVED FROM CURB BOX SO THAT SERVICE STOP IS FULLY EXPOSED.



**TYPICAL STREET INSTALLATION**  
WHEN CURB & SIDEWALK ARE SEPARATED



**TYPICAL STREET INSTALLATION**  
WHEN CURB & SIDEWALK ARE CONTINUOUS  
(OTHERWISE SAME AS ABOVE)



**DETAIL OF CURB BOX AND COVER**

Spec's By _____	<b>COUNTY OF MADERA</b>	Date 7-1-81
Drawn By <u>J. SHIELDS</u>		Scale NONE
APPROVED BY _____		Drawing No. W-7
REVISIONS	8/1/02	